

# Facility Rentals

Host your private function here!



**KILLARNEY**  
COMMUNITY CENTRE

Whether you are planning a birthday party, corporate function, meeting or private sports play, we have a variety of spaces to suit your needs.

## Staff Charges

Rentals outside of regular operating hours or special circumstances require rental staff. Staffing charges are \$20 per hour with a minimum of 2 hours regardless of the duration of the rental.

## Music Royalty Fees

All rentals that play pre-recorded music are subject to SOCAN and ReSOUND fees dependent on group size and activity.

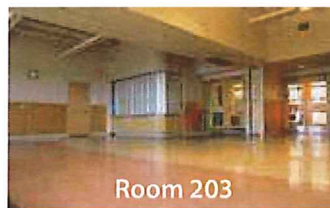
## Zero Waste Facility

Killarney Community Centre aims to be a Zero Waste Facility. We encourage you to utilize reusable, recyclable or compostable items at your event. Any items that do not fit within our Zero Waste guidelines will need to be removed from the property by the renters.

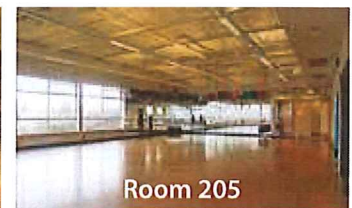
## Set-up and Take Down

All reservation times depicted on the Rental Agreement are inclusive to set up and clean up. All groups are responsible for their own set up, take down and basic cleanup of the rented space. Cleaning supplies will be provided.

Please note that Rentals Staff are not responsible for your set up, take down and clean-up of your rental. Rental Supervisors are employed to oversee the event to ensure compliance of the rental policies, ensure the building is secure and provide emergency assistance.



Room 203



Room 205

**Search, view, and reserve online by visiting [recreation.vancouver.ca](http://recreation.vancouver.ca) or contact our Rental Coordinator at [killarneyccrentals@vancouver.ca](mailto:killarneyccrentals@vancouver.ca) or 604-654-0785.**

*Please note that all rental inquiries will be responded to within 3-5 business days.*

## Cancellation & Refund Policy

1. When cancellation of a rental booking is done 14 or more days in advance of the booking, the rental group will receive a full refund (minus \$5 handling fee).
2. When cancellation of a rental booking is done between 8 and 13 days in advance of the booking, the rental group will receive a 50% refund excluding the damage deposit.
3. When 7 days or less notice is given for cancellation, no refund will be given, excluding the damage deposit.

### KILLARNEY COMMUNITY CENTRE RENTAL INFORMATION AND RATES

Room	Tables & Chairs Capacity (70%)	Approx. Size (Ft.)	Suitable Activities	General Public
Full Gymnasium	N/A	108'x68' 7344 SqFt.	Sports ONLY NO Wooden Sticks	\$61.50/hr
2/3 Gymnasium	N/A	70'x68' 4760 SqFt.		\$44/hr
1/3 Gymnasium	N/A	38'x68' 2584 SqFt.		\$22.10/hr
CC Room 201	11	20'x19' 380 SqFt.	Meetings & Socials	\$22.10/hr
CC Room 202	27	34'x16' 544 SqFt.	Meetings (adults only)	\$44/hr
CC Room 203	29	36'x29' 1044 SqFt.	Meetings & Socials	\$44/hr
CC Room 205	53	56'x34' 1904 SqFt.	Meetings, Socials & Dance	\$51.30/hr
CC Room 211	15	25'x21' 525 SqFt.	Meetings & Socials	\$44/hr
CC Kitchen 204	N/A	N/A	Fridge, Stove, Oven & Microwave	\$8/hr
Pool Multipurpose Room	14	33'x15' 495 SqFt.	Meetings & Socials	\$44/hr